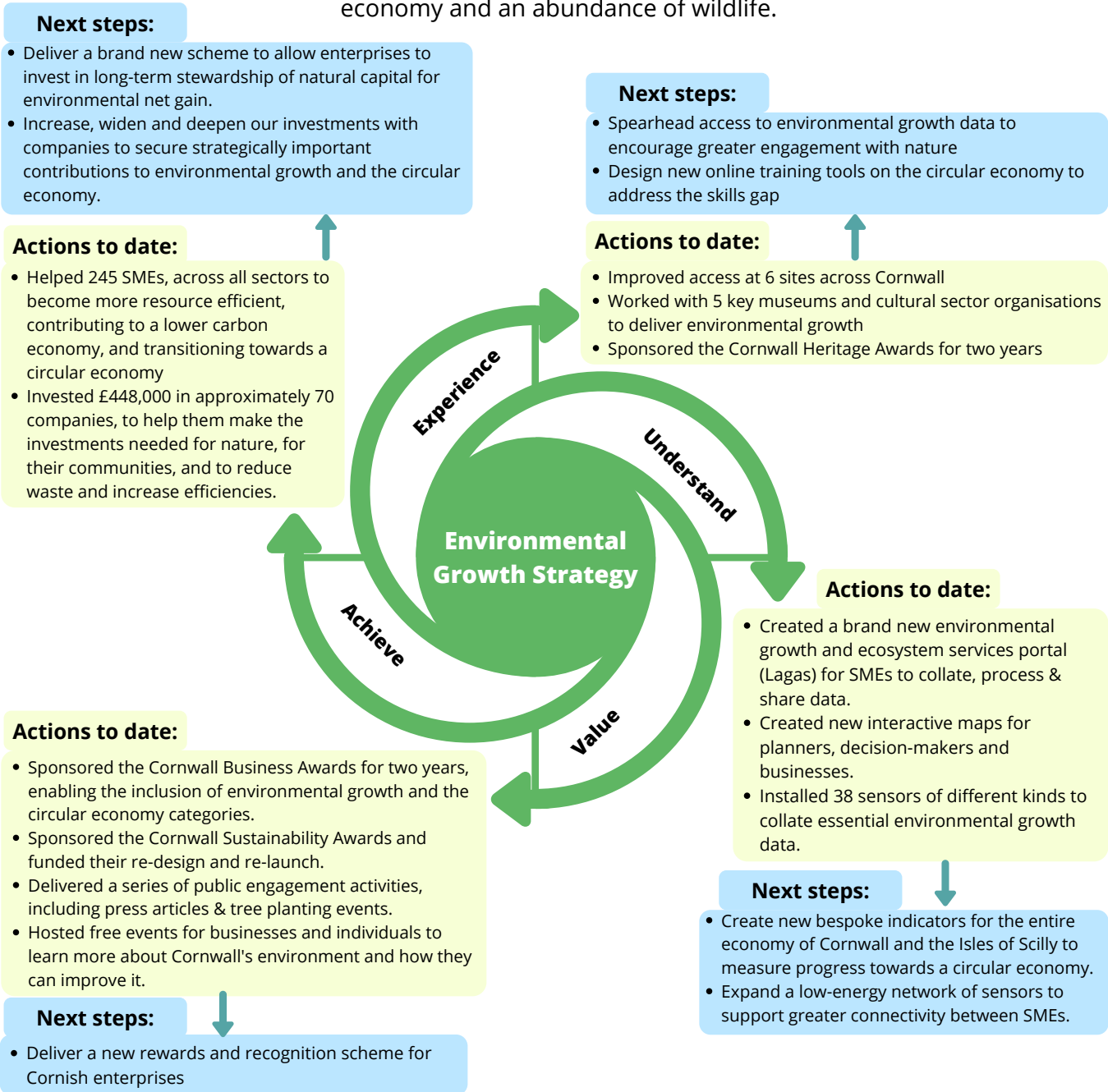


Tevi is a unique EU-funded collaboration bringing together expertise from across the University of Exeter (circular economy, engineering, ecology, mathematics, business innovation and product design) alongside that of Cornwall Council (environmental growth, policy and strategy, rewards and recognition), Cornwall Wildlife Trust (habitat management, biodiversity conservation) and Cornwall Development Company (grant funding expertise, programme delivery). The aim of Tevi is to help businesses thrive by contributing to Cornwall's environmental growth and transitioning to a circular economy.

## Tevi and Cornwall's Environmental Growth Strategy

Tevi significantly contributes to the delivery of Cornwall's Environmental Growth Strategy vision of a naturally diverse, beautiful and healthy environment that supports a thriving society, prosperous economy and an abundance of wildlife.



Local Industrial Strategy (LIS): Tevi has worked closely with stakeholders to help shape the emerging LIS, to ensure better integration of environmental growth and economic investment.



# 344 ENGAGED BUSINESSES

Small & Medium sized Enterprises (SMEs) across the county.

# 4,128 BUSINESS ASSIST HOURS

Bespoke consultancy provided to individual businesses.



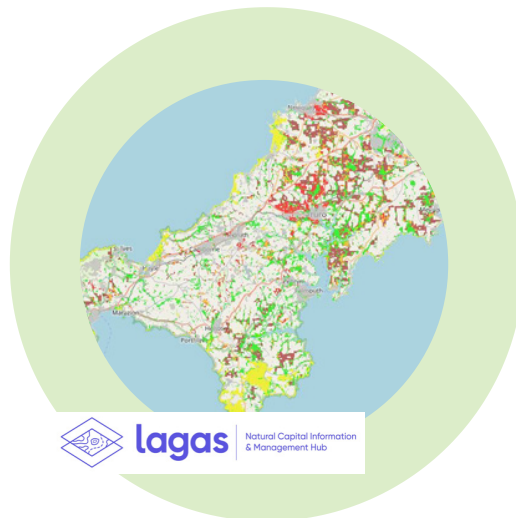
# 1,215 ATTENDEES

Joined our focussed workshops & events addressing Cornwall's major environmental challenges:including:

- Food Waste
- Electric Vehicles
- Advanced Moorings
- Canopy Cover
- Wildflower Seed
- Geo-resources

# ENVIRONMENTAL INTELLIGENCE

Developing an online hub (Lagas) of environmental intelligence across the county using the latest technology sensor network and mapping software.



**Tevi** Growing Your Business. Growing Our Environment.

## THE PK TRUST PLANET PK WILDFLOWERS

ENVIRONMENTAL GROWTH

**INTRODUCTION**  
The Porthousole Collective Trust (The PK Trust) is a registered charity which preserves the Porthousole House buildings, site and collections making it the former flagship station at Porthousole. The charity provides an educational facility, housing the legacy of the Porthousole family and is a registered charity. The PK Trust is a registered charity which preserves the Porthousole House buildings, site and collections making it the former flagship station at Porthousole. The charity provides an educational facility, housing the legacy of the Porthousole family and is a registered charity.

**GRANT AWARDED**  
**£10,000**  
Used to purchase wildflower seeds to be planted on car park beds and verges.

**IMPACT SUMMARY**  
The wildflower projects will be a major programme of activities for the organisation which will be focused on creating a vibrant and diverse wildflower meadow. This will be achieved through the planting of wildflower seeds and the maintenance of the meadow. The project will also be a major programme of activities for the organisation which will be focused on creating a vibrant and diverse wildflower meadow. This will be achieved through the planting of wildflower seeds and the maintenance of the meadow.

**BUSINESS ASSISTANCE**  
"The Tevi team were able to provide support on how we could use our available land to enhance species diversity to attract pollinator species that are under threat." This expert consultancy will help to protect and enhance the wildlife where we work and live!"

Sally Tomlinson (Manager)

**Logos:** Cornwall Wildlife Trust, EXETER, CORNWALL, European Union

**Tevi** Growing Your Business. Growing Our Environment.

## BENNAMANN LTD AIRPORT GRASS TO GAS

CIRCULAR ECONOMY

**INTRODUCTION**  
Bennamann Ltd is an early stage start-up working on commercial production, marketing and distribution of high quality biomethane using products that are produced from anaerobic digestion of organic materials at small farm scale units.

**GRANT AWARDED**  
**£9,536**  
Used to purchase a feasibility study of potential biomethane applications at Cornwall Airport Newquay.

**IMPACT SUMMARY**  
This project is concerned with the grant with the business by identifying a technical solution and business model for the commercial development of a new product and service offering in the biomethane sector. The study will provide the business with the technical and financial information needed to make the business case for the project and to secure funding for the project. It is anticipated that beyond the project, the support from the grant will allow a follow-on proposal to Cornwall Council and Cornwall LEADER to be submitted for commercial development of the site.

**BUSINESS ASSISTANCE**  
"We were delighted that the Tevi team were so supportive of this unusual and ground breaking project. We really want to make radical changes and Tevi saw the potential of this study not just for us but for the whole zero carbon sustainable energy future!"

Dr Chris Mann (CEO)

**Logos:** Cornwall Wildlife Trust, EXETER, CORNWALL, European Union

**Tevi** Growing Your Business. Growing Our Environment.

## NANCARROW COMPOSTER

CIRCULAR ECONOMY & ENVIRONMENTAL GROWTH

**INTRODUCTION**  
The events business of Nancarrow attracts around 7000 visitors a year with around 500 events. Local dining, shopping, corporate events, festivals, etc. are all part of the business.

**GRANT AWARDED**  
**£7,716.49**  
Used to purchase 2 x NANCARROW composters and maturation bases.

**IMPACT SUMMARY**  
This project has resulted in an immediate reduction of waste delivered to landfill whilst providing a valuable resource for the business. In the longer term nutrient rich compost will be produced to enrich the soil providing an environmental education opportunity contributing to Cornwall's brand as a leader in circular economy practices.

**BUSINESS ASSISTANCE**  
"Our hand was held quite firmly throughout the process. From scoping out the ideas to filling in all the paperwork, spreadsheets and financial information that we needed to, it was made quite easy!"

Paul Chubb (Director)

**Logos:** Cornwall Wildlife Trust, EXETER, CORNWALL, European Union

**Tevi** Growing Your Business. Growing Our Environment.

## TREE INVESTMENT LTD TREE INVESTMENT HUB

CIRCULAR ECONOMY & ENVIRONMENTAL GROWTH

**INTRODUCTION**  
The Investment Ltd are a unique architecture consultancy business providing strategic, creative and practical design and management solutions. Clients range from domestic households to commercial entities, from small scale residential projects to large scale commercial developments. The company offers a full range of services including architectural design, project management, construction management and more.

**GRANT AWARDED**  
**£7,999.40**  
Used to purchase Strategic Business Development support.

**IMPACT SUMMARY**  
The funding support provided has enabled Tree Investment Ltd to buy in strategic development support as a first phase of delivering the hub project. The development plan outlines costs, benefits and gains of creating an innovative environmental management team, with a view to developing a wider profile, which to address the climate emergency as well as supporting remaining wildlife populations.

**BUSINESS ASSISTANCE**  
"With Tevi support we were able to clarify our vision for our tree investment reality. We are now on the path to taking our business from inception to development and look forward to working with the useful contacts that we've made along the way!"

Steve Evans (Director)

**Logos:** Cornwall Wildlife Trust, EXETER, CORNWALL, European Union

Case studies available at [www.tevi.co.uk](http://www.tevi.co.uk)

